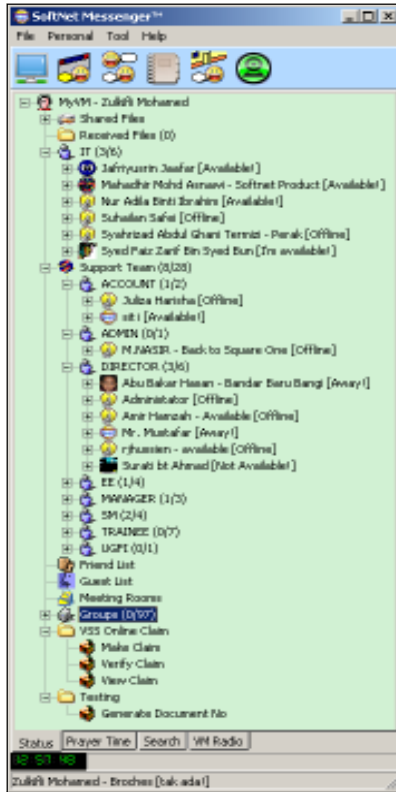


SoftNet Messenger

Instant Messaging Software

Latest Version: 2.6 FREE OF CHARGE Download at www.vss.com.my

Integration: Getting Maximum Value from Your Enterprise Instant Messenger (EIM)



SOFTNET MESSENGER PRODUCT FEATURES

IM becomes a truly strategic asset when it is tightly integrated into your other key enterprise applications. The more deeply and widely you integrate your EIM into your existing technology platform and into your business, the more productive and effective your teams will be.

The SoftNet Messenger is distinguished by the ease and breadth of its integration capabilities – making it an integral part of your communications infrastructure and a key enabler of your business.

Through a suite of flexible XML-based Application Programming Interfaces (APIs), the SoftNet Messenger integrates seamlessly into any asynchronous application or service to make it real-time, including Enterprise Information Portal (EIP), Customer Relationship Management (CRM), Enterprise Resource Planning (ERP), Supply Chain Management (SCM), Professional Services Automation (PSA) and e-commerce systems.

SoftNet Messenger's easy integration also makes it a natural launching pad into other synchronous communications tools such as videoconferencing, voice over IP, whiteboarding and application sharing, for a comprehensive, rich collaboration environment. SoftNet Messenger Integration APIs:

- ❖ User Interface
 - ❖ Directory
 - ❖ Messaging
 - ❖ Presence
 - ❖ Alerts
 - ❖ Contact List
 - ❖ Logging
 - ❖ Interoperable
-
- ✓ Live Video Conference
 - ✓ Electronic Discussion Board
 - ✓ Broadcast Music Station
 - ✓ File Sharing/Transfer
 - ✓ eSolat

Private Message with Video



Electronic Discussion/Bulletin Board



Live Audio/Video Conferencing



File Sharing/Transfer



Prayer Time/eSolat



Broadcast Music Station



EASY WAY TO COMMUNICATE



Leading the organizations into borderless solutions



Virtual Softnet Solutions Sdn. Bhd. (538175-D)
No 171-172, Persiaran PM/2, Manjung Business Centre, 32040 Sri Manjung, Perak Darul Ridzuan, Malaysia.
Tel: +605-687 9978 Fax: +605-687 9977
<http://www.vss.com.my>

www.vss.com.my

USER INTERFACE

The SoftNet Messenger is easily customized to integrate into the look and feel of your organization and/or any application. Users who log onto SoftNet Messenger EIM see a client window that is graphically branded with your logo and custom design. You can also add customized buttons linking back to specific parts of your home site or application.

DIRECTORY

With its single sign-on flexibility, SoftNet Messenger integrates with your existing directory infrastructure. Users can be securely authenticated and seamlessly logged into SoftNet Messenger based on any other authentication event that you select, whether it's your network directory, portal authentication, etc. SoftNet Messenger integrates with all forms of directory and identification management applications, including LDAP, Active Directory, Netegrity, etc. As a result, SoftNet Messenger enables new IM users or offices to come online with no additional software to be installed or administered. Users are automatically set up when logging in the first time, seamlessly and invisibly. Contact groups can be automatically populated based on memberships, roles, or permissions. Integration with the master directory lets users conveniently retain the same username they use to access the customer or partner's product or site (i.e., jdoe@im.yourcompany.com).

MESSAGING

Users of SoftNet Messenger-enabled applications can launch an IM session directly from icons embedded in the interface of the third-party application. Consider, for example, an application's user directory where IM icons are added for each directory listing so users can start IM dialogues with people they find in the directory -- even if those individuals are not in the user's IM contact list. This feature is particularly helpful for users requiring contextually relevant assistance or collaboration from individuals outside their immediate teams.

PRESENCE

You can also easily extend SoftNet Messenger IM and chat into voice and web conferencing, for example. If people in a text chat want to initiate a conference to collaborate on a Powerpoint presentation -- one user can simply click a button and initiate sessions causing all of their phones to ring, joining them to the voice conference and causing a pop-up invitation to the Web conference (WebEx, DCL, Placeware, etc.).

The SoftNet Messenger maintains presence information on individuals or groups of users for integration with other user applications. It enables users' presence status (e.g., online, offline, idle, away) to be displayed directly in the interface of any 3rd party application.. Using icons similar to those found in the contact list, you can place real-time Presence throughout the application, wherever a user's

name or identification appears. Presence icons can simply indicate a user's presence status, or they can be interactive and enable other users to initiate a Messaging session.

ALERTS

SoftNet Messenger generates pop-up and message events, invitations, notifications, and more, with HTTP and SMTP post options. By using integrated SoftNet Messenger IM and Alerts to immediately notify groups and individuals about critical developments, you enable them to instantly become aware of, and respond to, issues--no matter where they are. Consider, for example, a simple integration with personal productivity applications. Your team is creating a time-sensitive proposal for a new prospect. As soon as your teammate posts the initial draft, you receive a pop-up alert telling you it is ready for review, with a link to the proposal in your document management application. While reviewing the document, you wanted to question your teammate about the cost figures. With SoftNet Messenger embedded in the document management tool, you can see whether the teammate is online, and by simply clicking on the author's name, send her an IM, and instantly receive an answer.

CONTACT LISTS

The SoftNet Messenger includes an API to enable server-to-server integration between the SoftNet Messenger server and your application server. This allows a third party application to manage certain essential functions such as adding a user. The API capability eases the administration and management functions of the IM service and reduces the burden on users to manage their participation in group-sponsored activities.

LOGGING

SoftNet Messenger provides an API to capture and log all communications for compliance or knowledge management use. Logging features include:

- ❖ Site specific logging
- ❖ XML-based with a DTD that can be customized
- ❖ Log output can be controlled as to frequency and size of collected logs -- output is available for compliance, knowledge management and other applications
- ❖ SMTP can be used to transport the log files to a remote storage location
- ❖ Compliance with all regulatory archiving requirements (SEC, NASD, NYSE)

INTEROPERABLE

SoftNet Messenger users can easily communicate with millions of other IM users on the Web. The SoftNet Messenger supports multiple other consumer and business IM networks through a common UI. It automatically saves a user's existing contact list to other networks, giving the user a single interface for managing all of instant messaging contact lists.

SECURITY

Your organization can't afford unauthorized access, third parties 'listening in,' destructive viruses, or other intrusions. That's why SoftNet Messenger provides industry-leading security features.

SoftNet Messenger addresses security from numerous angles:

- ❖ Ensure your organization's communications are completely safe and secure with industry standard 2-way encryption of every message. Communication between clients and servers is achieved through use of Secure Sockets Layer (SSL) for service authentication and the privacy of your proprietary communications. Use single sign-on and integrate secure authentication into your portal or directory authentication network.
- ❖ Protect your investment in PKI solutions by integrating client-side digital certificates for identity access management.
- ❖ Maintain your existing network security policies and procedures. Because SoftNet Messenger works with your existing firewall and proxy server infrastructure, there is typically no need to open new ports into your network or change your security rule sets and/or supported protocols.
- ❖ Leverage rules-based privacy and presence management tools that can be administered at user and organization levels
- ❖ Automatically log and archive all communications --controlling frequency and size of collected logs -- for future data retrieval and data mining.

KEY FEATURES

- ✓ Text/Images Messaging
- ✓ Voice over Internet Protocol (IP)
- ✓ Video Conference
- ✓ File Sharing/Transfer
- ✓ Ready with SM POP3/SMTP Email Server
- ✓ Automatic Email Checking
- ✓ Message/Discussion/Bulletin Board
- ✓ Broadcast Command
- ✓ Iconic Expression
- ✓ Sound
- ✓ Ready with Application Embedded
- ✓ Friends/Guests/Groups List
- ✓ User Defined Chat Room
- ✓ Prayer Time Alerter Tool



Leading the organizations into borderless solutions



Virtual Softnet Solutions Sdn. Bhd. (538175-D)

No 171-172, Persiaran PM/2, Manjung Business Centre, 32040 Sri Manjung, Perak Darul Ridzuan, Malaysia.

Tel: +605-687 9978 Fax: +605-687 9977

<http://www.vss.com.my>